



figure

497

ends
form

wafer type
straight



BUTTERFLY VALVE



body material	nominal pressure	nominal diameter	max. temperature
B nodular cast iron	C 16 bar	DN 25-600	120°C

FEATURES

- high tightness
- seat materials EPDM/NBR
- central disc bearing
- Environment-friendly
- GEARBOX
- mechanical strenght 10 000 cycle on/off
- aluminium or cast iron housing
- end stops for on/off
- position indicator

APPLICATION

- cold and cooling water plants
- heating installations
- drinking and domestic water
- wase installations
- shipbuilding industry
- power installations

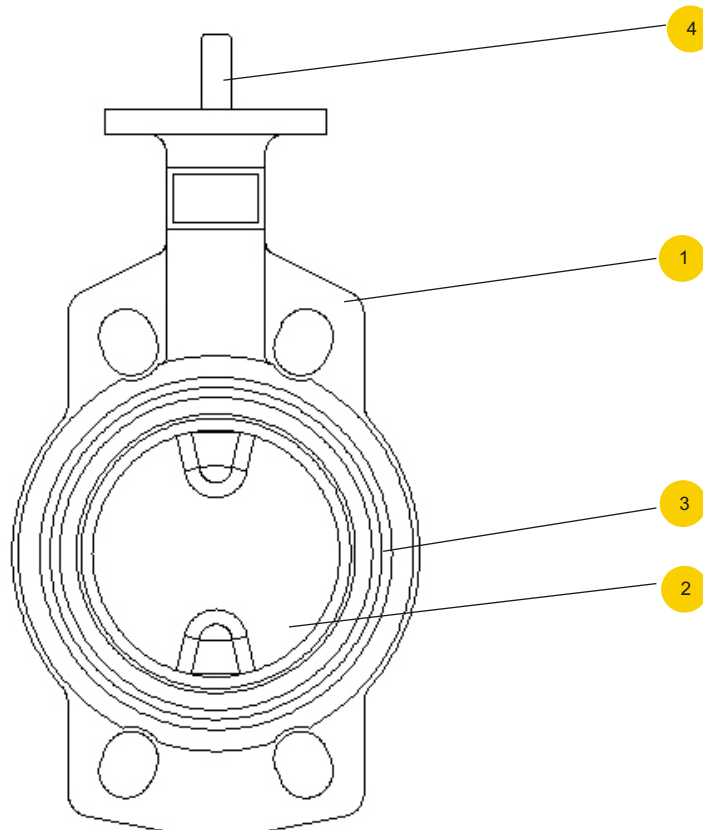
Data given can be changed without notice.

Edition 10/2012



figure	497
ends form	wafer type straight

MATERIALS

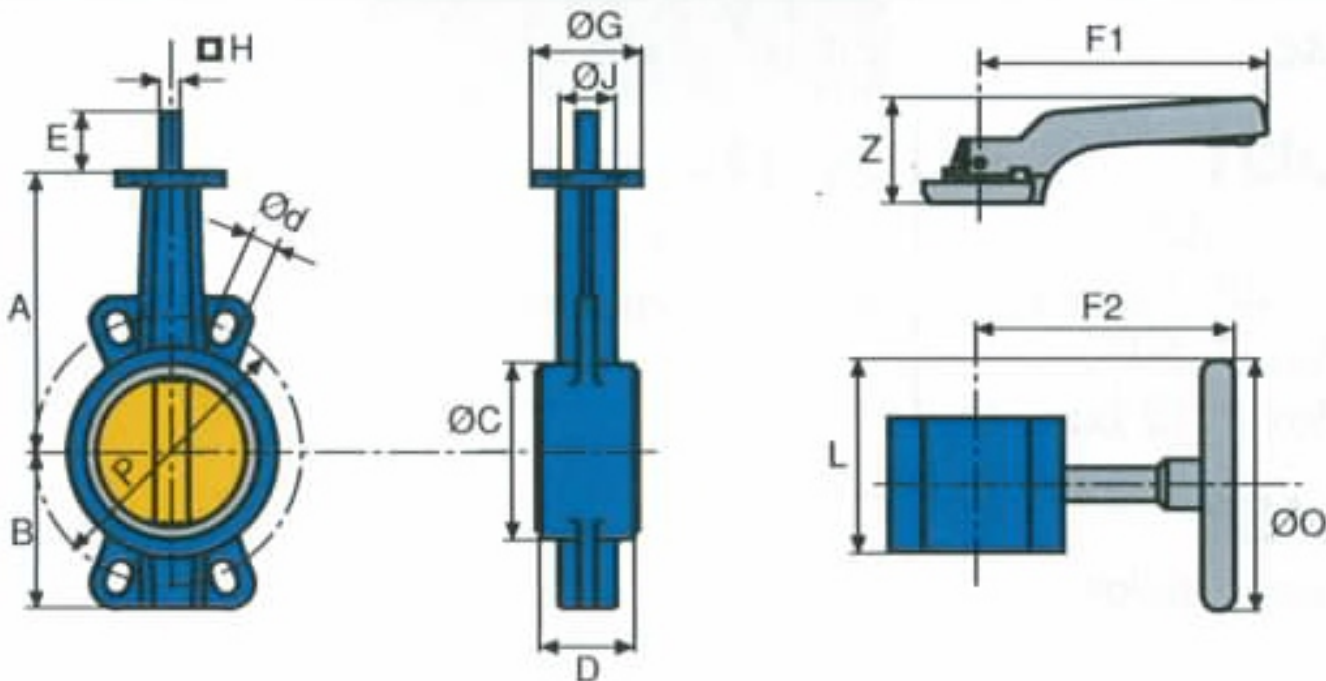


body material		B	
type		67	68
1	body	EN-GJS-400-15 5.3106(ex.JS1030)+EPOXY	
2	disc	EN-GJS-400-15 5.3106(ex.JS1030) covered by nikel	AISI 316
3	seat	EPDM	
4	stem	AISI 416	
max. temperature		120°C	



figure	497
ends form	wafer type straight

DIMENSIONS



DN		A	B	C	D	F1	Z	F2	L	O	d	P	J	G	E	H	
mm	inch	mm															kg
25	1 1/4"	121	53	65	33	200	68	157	116	150	14	85	50	65	32	7	1,75
32	1 1/4"	121	57	73	33	200	68	157	116	150	18	100	50	65	32	7	1,70
40	1 1/2"	130	61	82	33	200	68	157	116	150	18	110	50	65	32	9	2,00
50	2"	136	77	95	43	200	68	157	116	150	18	125	50	65	32	9	2,50
65	2 1/2"	142	87,5	109	46	200	68	157	116	150	18	145	50	65	32	9	3,10
80	3"	158	95	127	46	200	68	157	116	150	18	160	50	65	32	9	3,85
100	4"	180	107	152	52	200	68	157	116	150	18	180	50	65	32	11	4,75
125	5"	192	121	180	56	277	77	157	116	150	18	210	70	90	42	14	6,35
150	6"	215	144	207	56	277	77	157	116	250	22	240	70	90	42	14	8,50
200	8"	241	171	260	60	358	50	245	192	300	22	295	102	125	32	17	13,00
250	10"	280	205	320	68	504	47	230	190	300	26	355	125	150	32	22	29,75
300	12"	310	235	375	78	504	47	230	190	300	26	410	125	150	32	27	45,30
350	14"	337	258	416	78	-	-	230	190	300	26	470	125	150	48	27	54,50
400	16"	357	303	466	102	-	-	233	208	300	30	525	125	150	48	27	89,85

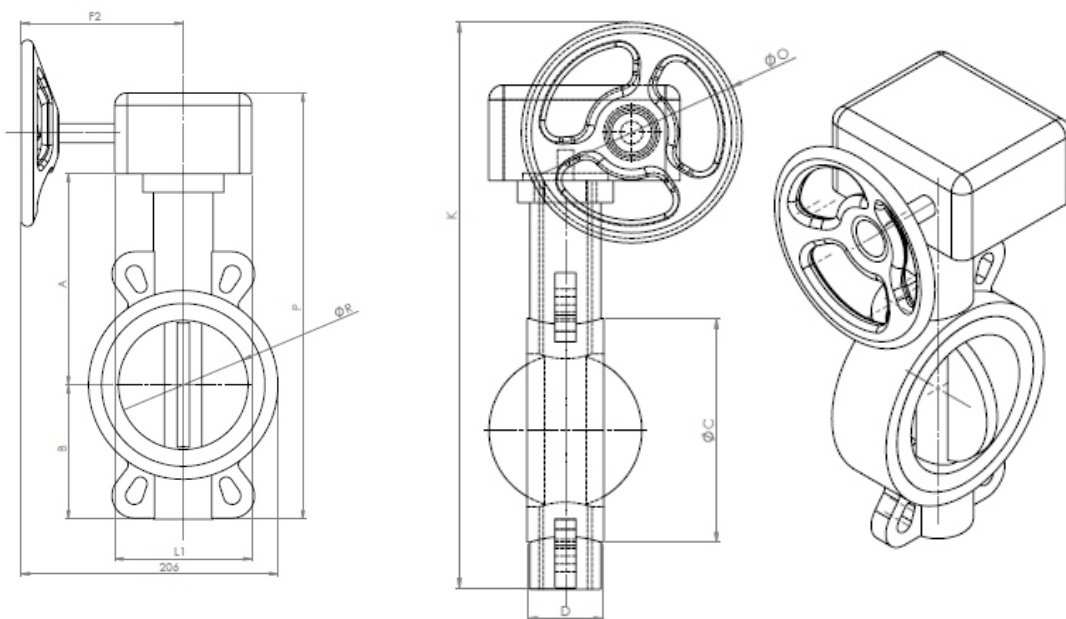
Data given can be changed without notice.

Edition 10/2012



figure	497
ends form	wafer type straight

DIMENSIONS



DN		A	B	L1	P	F2	K	D	C	O	
mm	inch	mm									kg
25	1 1/4"	121	53	110	239	130	276,5	33	65	140	2,68
32	1 1/4"	121	57	100	243	130	280,5	33	73	140	2,68
40	1 1/2"	130	61	110	256	130	293,5	33	82	140	2,93
50	2"	136	77	110	278	130	315,5	43	95	140	3,61
65	2 1/2"	142	87,5	110	294,5	130	332,0	46	109	140	4,38
80	3"	158	96	110	319	130	356,5	46	127	140	4,96
100	4"	180	107	110	352	130	389,5	52	152	140	5,76
125	5"	192	121	110	378	130	415,5	56	180	140	8,27
150	6"	215	144	110	424	130	461,5	56	207	140	9,13
200	8"	241	171	155	500	176	606,0	60	260	300	16,57
250	10"	280	205	160	573	200	679,0	68	320	300	25,42
300	12"	310	235	160	633	200	739,0	78	375	300	32,87
350	10"	355	257	160	680	200	786,0	78	406	300	49,92
400	12"	360	292	160	740	200	846,0	86,5	471	300	77,06



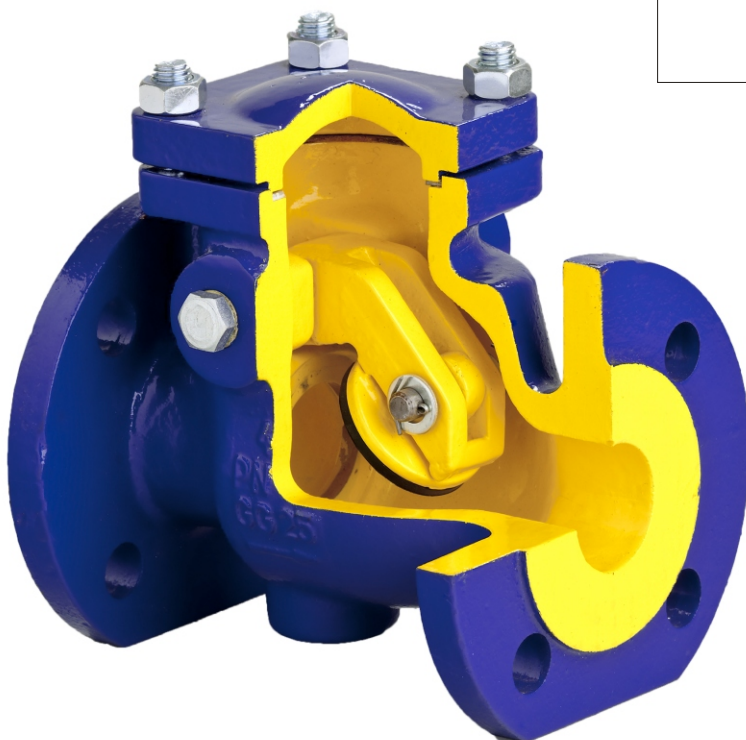
figure 302

ends form flanged straight



CHECK VALVE

body material	nominal pressure	nominal diameter	max. temperature
A grey cast iron	C 16 bar	DN 40-300	300°C
	B 10 bar	DN 40-250	



correspond to the pressure equipment directive 97/23/EC

FEATURES

- closing tightness acc. EN -12334
- compact settlement
- environment-friendly
- no maintenance
- flanges drilled according to EN 1092-2
- face-to-face dimension according to EN 558-1 series 48

APPLICATION

- hot and cold water plants
- steam plants
- industrial technologies
- neutral fluids
- heat and refrigerating engineering,

Data given can be changed without notice.

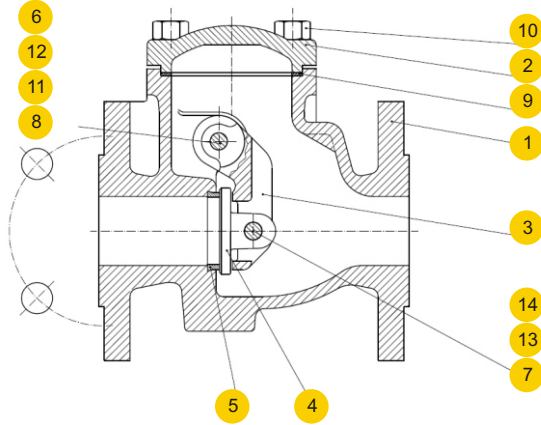
Edition 10/2012



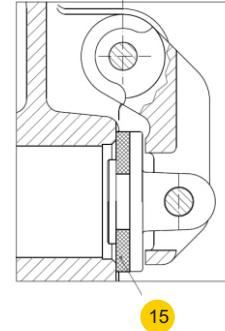
figure	302
ends form	flanged straight

MATERIALS

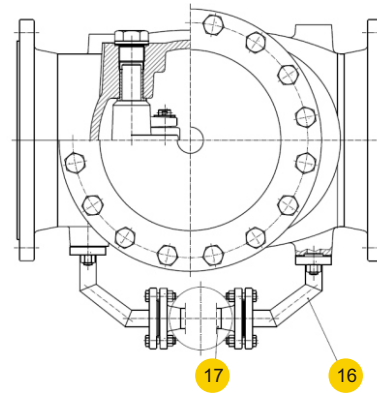
type 01; 02



type 06



type 91



body material		A			
type		01	02	06	91
1	body	EN – GJL-250 5.1301 (ex.JL1040)			
2	cover	EN – GJL-250 5.1301 (ex.JL1040)			
3	hinge	EN – GJS-500-7 5.3200(ex.JS1050)			
4	flap	LH14 (G-X20Cr14)	G-CuSn10-B	EN – GJS-500-7 5.3200(ex.JS1050)	LH14 (G-X20Cr14)
5	seat ring	X12Cr13 1.4006	G-CuSn10-B	-	X12Cr13 1.4006
6	pin bearing	brass for DN 200-300			
7	flap pin	X20Cr13 1.4021	CuZn40Pb2	X20Cr13 1.4021	X20Cr13 1.4021
8	pin	X20Cr13 1.4021	CuZn40Pb2	X20Cr13 1.4021	X20Cr13 1.4021
9	cover gasket	graphite CrNi			
10	bolt	8.8 A2A			
11	plug	10S20 zinc galvanized for DN 40-150 EN-GJL-250 JL1040 for DN 200-300			EN-GJL-250 JL1040
12	plug gasket	carbomide-rubber			
13	washer	carbon steel A2A			
14	split pin	X5CrNi18-10			
15	disc gasket	-	-	EPDM	-
16	pipeline	-	-	-	carbon steel
17	by-pass	-	-	-	Fig. 215
max. temperature		300°C	225°C	120°C	300°C

Data given can be changed without notice.

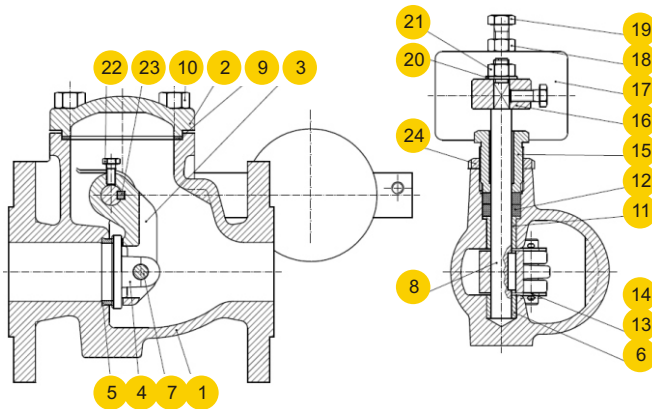
Edition 10/2012



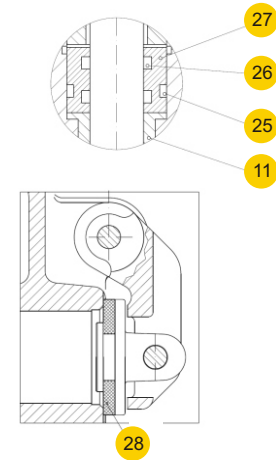
figure **302**
ends form flanged straight

MATERIALS

type 11; 21;12;22



type 16; 26



body material		A		
type		11; 21	12; 22	16; 26
1	body		EN – GJL-250 5.1301 (ex.JL1040)	
2	cover		EN – GJL-250 5.1301 (ex.JL1040)	
3	bow		EN – GJS-500-7 5.3200(ex.JS1050)	
4	flap	LH14 (G-X20Cr14)	G-CuSn10-B	EN – GJS-500-7 5.3200(ex.JS1050)
5	seat ring	X12Cr13 1.4006	G-CuSn10-B	-
6	bearing sleeve		brass for DN 200-300	
7	flap pin	X20Cr13 1.4021	CuZn40Pb2	X20Cr13 1.4021
8	shaft	X20Cr13 1.4021	CuZn40Pb2	X20Cr13 1.4021
9	cover gasket		graphite CrNi	
10	bolt		8.8 A2A	
11	neck bush		MM58 (CuZn40Mn1,5)	
12	packing.		graphite	-
13	washer		carbon steel A2A	
14	split pin		X5CrNi18-10	
15	gland		EN – GJL-250 5.1301 (ex.JL1040)	
16	hinge		S235JR	
17	weight		EN – GJL-250 5.1301 (ex.JL1040)	
18	nut		8.8 A2A	
19	bolt		33H-A2A	
20	washer		carbon steel A2A	
21	nut		8.8 A2A	
22	bolt		33H-A2A	
23	sunk key		X20Cr13 1.4021	
24	nut		KM-6A2A	
25	seat ring	-	-	EPDM
26	seat ring	-	-	EPDM
27	pilot sleeve	-	-	M63
28	disc gasket	-	-	EPDM
max. temperature		300°C	225°C	120°C

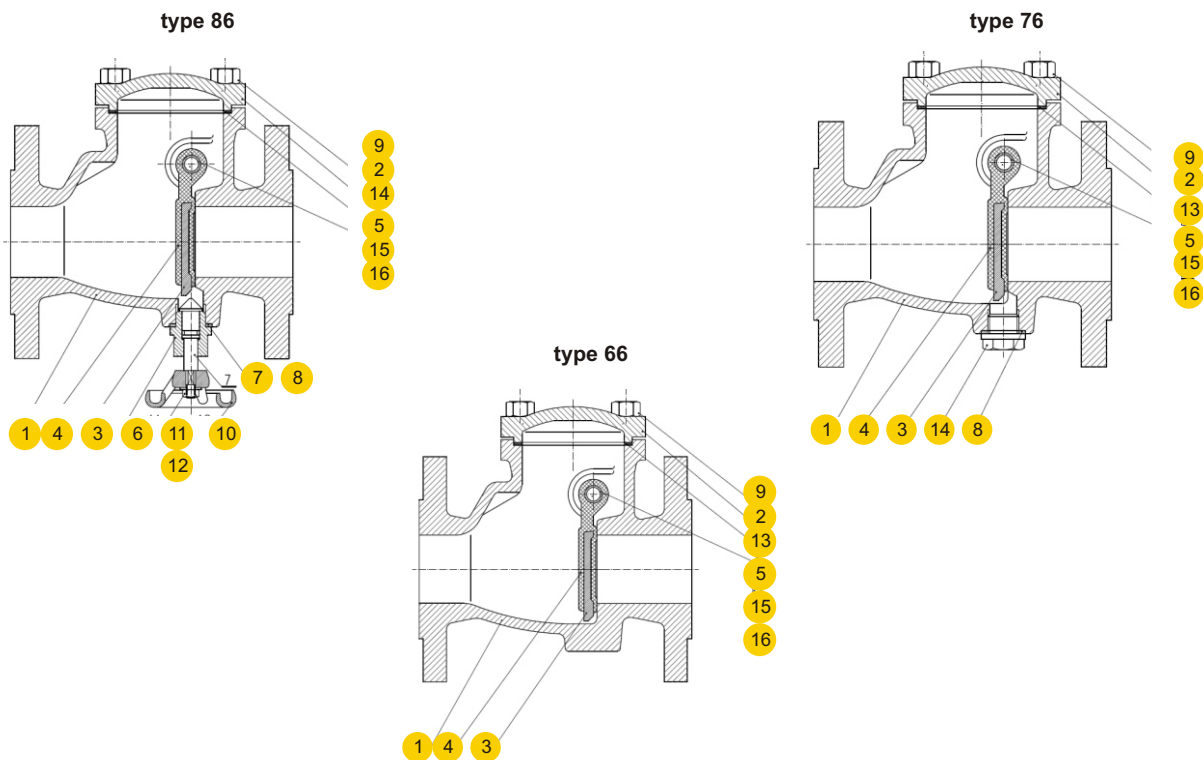
Data given can be changed without notice.

Edition 10/2012



figure	302
ends form	flanged straight

MATERIALS



body material		A		
type		86	76	66
1	body	EN – GJL-250 5.1301 (ex.JL1040)		
2	covert	EN – GJL-250 5.1301 (ex.JL1040)		
3	flap	EN – GJS-500-7 5.3200(ex.JS1050)		
4	flap gasket	EPDM		
5	pin	X20Cr13 1.4021		
6	sleeve	CuZn40Mn1.5	-	-
7	stem	CuZn40Mn1.5	-	-
8	gasket	carbomide-rubber		-
9	bolt	8.8 A2A		
10	hand wheel	EN – GJL-250 5.1301 (ex.JL1040)	-	-
11	nut	8.8 A2A	-	-
12	washer	carbon steel A2A	-	-
13	cover gasket	graphite CrNi		
14	plug	-	CuZn37	-
15	plug	10S20 zinc		
16	plug gasket	carbomide-rubber		
max. temperature		120°C		

Data given can be changed without notice.

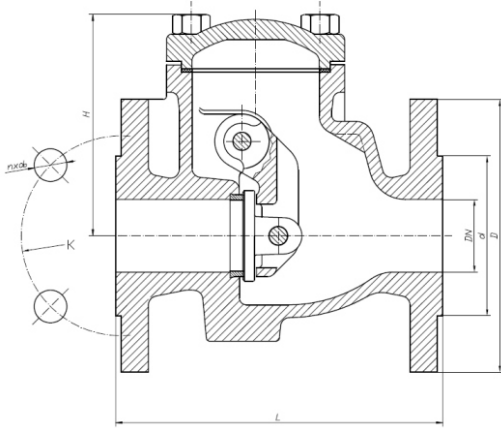
Edition 10/2012



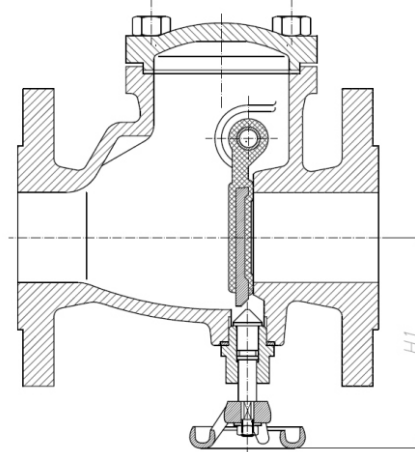
figure **302**
 ends form flanged straight

DIMENSIONS

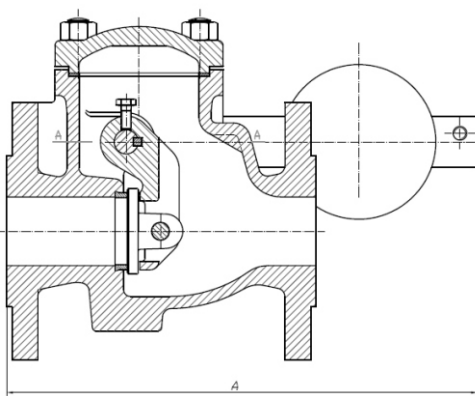
type 01; 02; 06



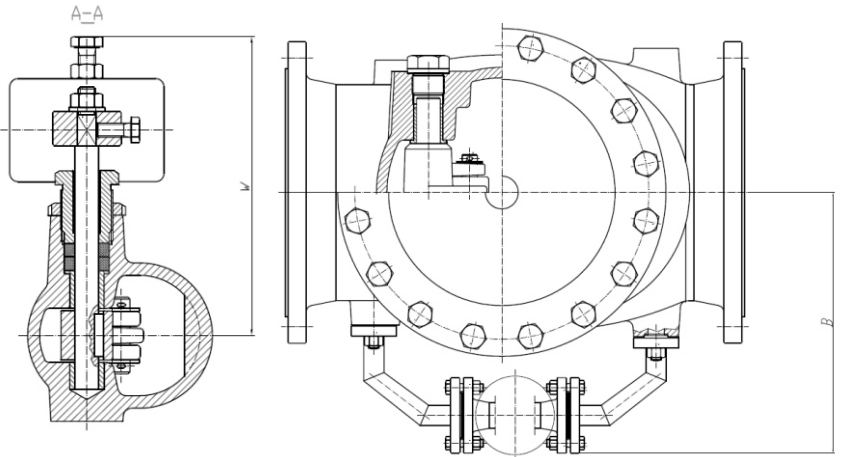
type 86



type 11; 12; 16; 21; 22; 26



type 91



DN	302						302.21,22,26	302.86	302.91	302.01 302.02 302.06	302.11.21 302.12.22 302.11.26	302.86	302.91	
	L	D	d	K	nxdo	H	A	W	H1	B				
mm											kg			
40	180	150	84	110	4x19	119	350	170	120	-	9,0	11,8	9,0	-
50	200	165	99	125	4x19	120	352	180	125	-	11,0	13,5	12,6	-
65	240	185	118	145	4x19	141	359	190	130	-	15,2	18,0	17,0	-
80	260	200	132	160	8x19	168	371	200	140	-	20,8	23,5	21,9	-
100	300	220	156	180	8x19	175	447	210	175	-	31,5	36,0	31,0	-
125	350	250	184	210	8x19	199	466	225	190	-	46,0	51,0	45,0	-
150	400	285	211	240	8x23	217	574	250	210	-	60,0	67,0	61,0	-
200	500	340	266	295	12x23	277	662	306	280	380	120	129	120	131
250	600	405	319	355	12x28	337	850	348	315	410	180	198	180	202
300	700	460	370	410	12x28	850	850	348	-	400	250	285	-	283

Data given can be changed without notice.

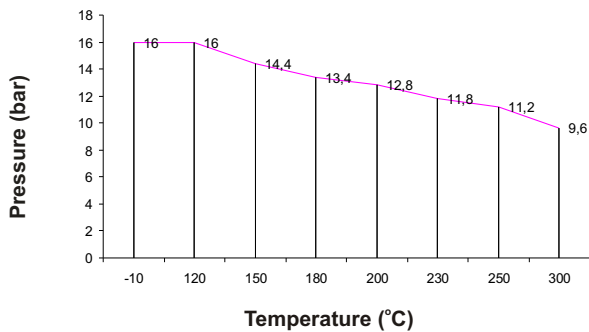
Edition 10/2012



figure	302
ends form	flanged straight



PRESSURE-TEMPERATURE RATINGS



Allowed working conditions range
PN 16 EN-GJL-250



figure **400**

ends form flanged
Y-type



CHECK VALVE

body material	nominal pressure	nominal diameter	max. temperature
B nodular cast iron	C 16 bar	DN 50-150	70°C
	B 10 bar	DN 200-400	

* DN 300-400 on request



FEATURES

- very slight pressure drop
- fill bore
- self cleaning
- silent
- horizontal and vertical installation

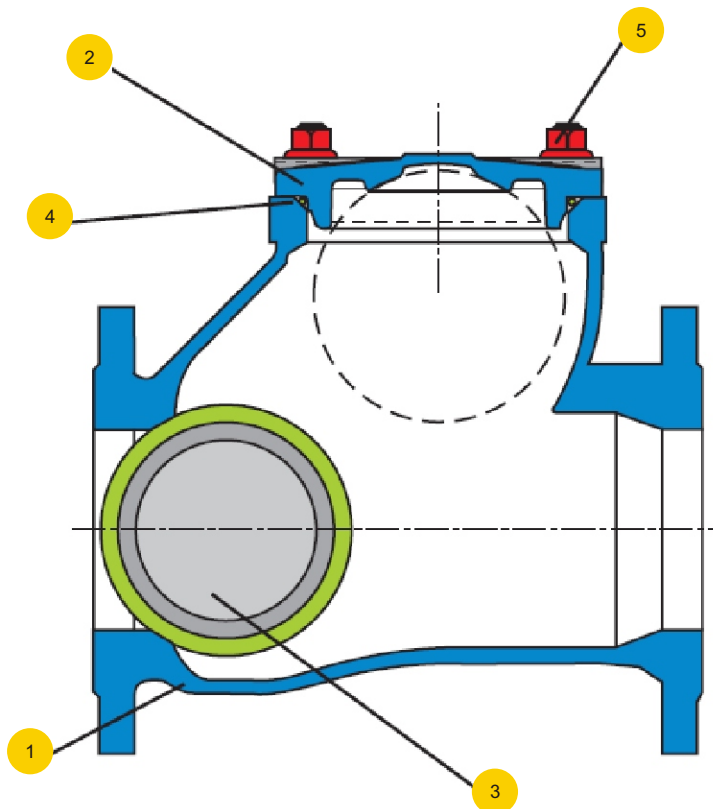
APPLICATION

- heavy, thick and viscous fluids
- dirty water



figure	400
ends form	flanged Y-type

MATERIALS



	body material	B
	type	55
1	body	EN- GJS- 400-15 5.3106 (ex.JS 1030)
2	cover	EN- GJS- 400-15 5.3106 (ex.JS 1030)
3	ball	metal/ NBR
4	O - ring	NBR
5	stud bolt +nut	AISI 304
	max. temperature	70°C

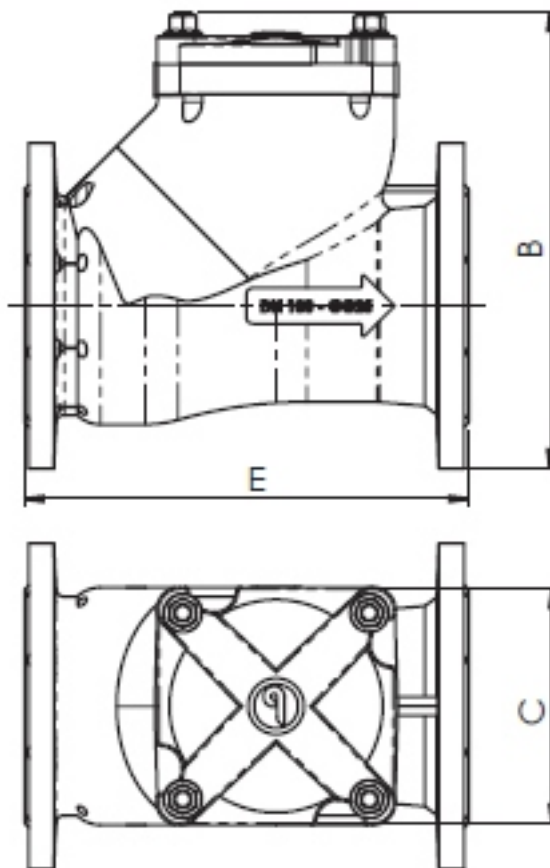



figure **400**

ends
form

flanged
Y-type

DIMENSIONS



DN	A	B	C	E	Kvs	
mm						kg
50	165	180	95	200	90	8,5
65	185	210	114	240	140	12
80	200	240	128	260	253	15
100	220	285	160	300	369	22
125	250	330	200	350	642	34
150	285	390	230	400	962	45
200	340	480	320	500	1990	80
250	400	600	414	600	3100	135
300	450	680	460	700	4100	200
350	505	800	596	850	5050	300
400	565	1050	690	1100	6500	600

Data given can be changed without notice.

Edition 04/2013